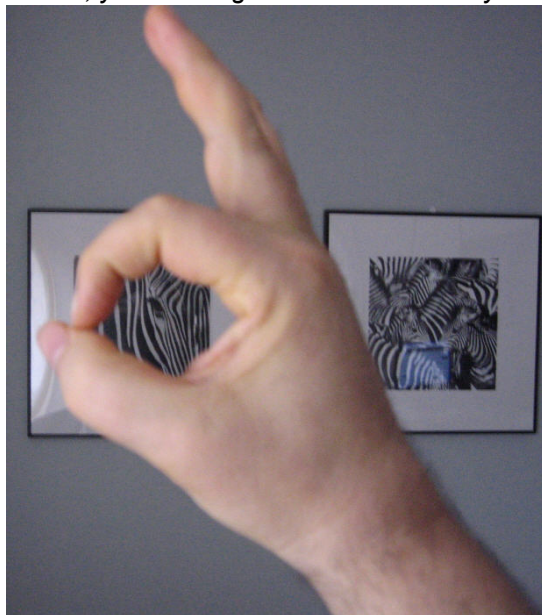


Just like a dream, you entering this world and take your first breath



The Hypo-thesis of cognition – A Central command in emergency light

In this hypothesis I will show a possible reactive agent in the etiology of Schizophrenia This first step is showing a map of what CS₂ are capable of. The next step will look into earlier steps in the etiological map of the etiology of Schizophrenia, the preconditioning.

Corresponding Author: POW Pär-Olof Wassén,

Corresponding Author's Institution: [CAC-Hålet](#) Theory

First Author: Pär-Olof Wassén

In Short ...

1/ There is a substance* known to cause some of the symptoms in Schizophrenia

2/The group of persons with Schizophrenia** does have it, other usually don't

3/ There might be a connection with, the reactive phase of Schizophrenia etiology and the substance.

The Substance is: Carbon Disulfide or CS₂

* [CS₂ Intro](#) at ADHD och ADD.

**Clin Pathol 1993;46:861-864

Increased pentane and carbon disulfide in the breath of patients with schizophrenia

CAC-Hålet theory The reactive agent

-Showing what hypothetically could be a reactive factor in the etiology of Schizophrenia

The thermodynamics of Homo Sapiens largely rely on old CODH/ACS constructions for TCA, carbon to carbon transfer, glucose and lipid metabolism. It is shown in bacterial CODH/ACS that CS₂ can alter the thermodynamics of the process by tunnel gating in centre A. (9) The mechanisms in Homo Sapiens enzymology still remains to be elucidated.

CS₂ exposure can give symptoms of Schizophrenia. (1) People with Schizophrenia have CS₂ in their breath (2) other persons usually don't. Persons with Schizophrenia appears to react differently and have different partial arterial pressure on CO₂ than others (3), (4). The very ground-level carbon to carbon

transfer used in CO₂ fixation is done by constructions relying on the CODH/ ACS. The distribution of cerebral blood flow is highly sensitive to changes in the arterial CO₂. (5) The CO₂ regulations during sleep might be more vulnerable. (6) When the CS₂ reactivity where measured between groups exposed to CS₂ and not exposed to CS₂, a remarkable difference was noted in the reactivity to CO₂. (7) It has been shown in rats that low PaCO₂ inhibits NMDA receptors. (8) The Thermodynamic backbone of human Neural transmittance is dependent on lipid and glucose metabolism, both is altered by the gating in the CODH/ACS tunnel A. One study suggests that the effect of CS₂ on learning and memory ability in rats is related to the activity of NOS and the expression of nNOS in the hippocampus. (10)

B-vitamin metabolism disturbance

Exposure to carbon bisulfide results in an increased turnover of the B-vitamin complex (16, 17, 18, 19, 20) CS₂ induced elevated serum lipid levels and decreased cholesterol synthesis (on rat, 176 ppm, inh) are reportedly blocked by feeding nicotinic acid at a dose of 40 mg/kg/da (20) Nicotinic acid has protective effects against CS₂ poisoning. CS₂ reduces the levels of Nicotinic Acid. (21 22 23 24 25)

Chelating effects on various essential trace metals

Carbon disulfide reacts with the amino groups of amino acids and proteins to form thiocarbamate in blood and tissues (36) thiocarbamates, possessing sulfhydryl groups, may chelate polyvalent inorganic ions. CS₂ reacts with endogenous amines to form dithiocarbamates.(26) which could be metabolized back to CS₂. An implication is the formation of acid labile CS₂ (AL CS₂) that will continue to increase, even at steady-state concentrations of CS₂, as long as free CS₂ is available to the tissue and adequate amine substrates are available. (26) An additional important finding was the slow elimination of AL CS₂, suggesting that AL CS₂ may accumulate in the body after repeated exposure to CS₂. (26)

Dithiocarbamates are capable of chelating several polyvalent inorganic ions such as copper and zinc, and thus may inactivate numerous enzymes in which these ions are essential for activity. (27) The hypothesis of a chelating effect has been supported by the results of some studies (28), Reports of increase in zinc and copper excretion in exposed rats, but also increased copper levels in peripheral nervous tissue of exposed rats (28) (29). Copper and zinc ions are essential for the prosthetic groups of many enzymes. The neurotoxic action of carbon disulfide and its interference with the activity of many enzymes could partly be explained by chelating effects. Zinc is required for the activity of enzymes such as lactic acid dehydrogenase a, carbonic anhydrase, glutamate dehydrogenase, and alcohol dehydrogenase. Copper, represents a cofactor of pyridoxol, a form of vitamin B6. Copper is required for the proper functioning of enzymes such as cytochrome c oxidase, the coenzyme A dehydrogenase system, eg. dopamine β hydroxylase. The loss of copper from the spinal cord is accompanied by cellular damage, producing tissue degeneration. Disturbances of the central and peripheral nervous systems, resulting from carbon disulfide exposure, could be connected with the loss of copper due to chelation and consequent inhibitory effects on enzyme systems (30) like Tyrosinase and the very core carbon to carbon transfer.

LOX, Lysyl oxidase is copperdependent. The LOX activity are essential for the mechanical stability of the fibers and other supramolecular assemblies formed by these proteins and the elasticity of elastin. Because collagens and elastin are important components of the extracellular matrix, abnormalities in their modification can be expected to affect many tissues, as seen in lathyrism, a connective tissue disorder caused by the administration of β-aminopropionitrile, an irreversible inhibitor of lysyl oxidases. (31) Extracellular copper enzymes initiate the formation of the lysine and hydroxylysine derived crosslinks in collagens and lysine-derived crosslinks in elastin. (32) CS₂-mediated protein cross-linking occurs in vivo through the generation of Lys-Lys thiourea and that diethyldithiocarbamate can, through in vivo release of CS₂, produce the same cross-linking structure. This observation supports the utility of cross-linking of peripheral proteins as a specific dosimeter of internal exposure for CS₂ and provides a biomechanistic explanation to account for the high-molecular-weight neurofilament protein species isolated from rats exposed to CS₂ or N, N-diethyldithiocarbamate. (33) High levels of homocysteine will irreversibly inhibit LOX. (34) One study suggest that LDL downregulation of LOX could contribute to the endothelial dysfunction caused by hypercholesterolemia, thus contributing to atherosclerotic plaque formation. (35) It has been reported that the glucose and lipid metabolism is disturbed by carbon disulfide both in

experimental animals and in exposed workers, but not to conclusive. There is a large body of indirect information associating abnormal energy metabolism in peripheral neuropathies caused by CS₂.

The energy depletion

The pathomorphology of CS₂ neuropathy resembles much like other samples originating from an impaired energy metabolism. (37) A study in rats shows the oxidative effects of CS₂ exposure, a marked increase in cerebral cortex hippocampus, spinal cord and serum. Reactive oxygen species, Malondialdehyd. Ca²⁺ and Calmodulin levels increased in in Cerebral Cortex, hippocampus and spinal cord. (38) Carbon disulfide is used in viscose rayon plants as a solvent in the spinning process. It is known to have central and peripheral neurotoxic effects, and among the pleiotrophic conditions it causes are atherosclerotic change, diabetes mellitus, and coronary heart disease (39-42). In previous studies, the radiologic findings of carbon disulfide poisoning were diffuse or focal brain atrophy, infarcts in the basal ganglia, subcortical white matter and gray matter, and central demyelination (43-47). A few case reports have described the computed tomographic (CT) (43-47) or magnetic resonance imaging (MRI) findings (46, 47) Finding of decrease in the GSH contents and GSH-Px, CAT activities in cerebral cortex, hippocampus, spinal cord and serum. The activities of T-AOC also decreased in all three nerve tissues and serum, as time went on and symptom developed. Furthermore, significant correlations between LPO and gait abnormality were observed as symptom developed. Oxidation stress also resulted in increased Ca (2+) concentrations and calmodulin (CaM) levels increases in cerebral cortex, hippocampus and spinal cord. (48) Carbon disulfide intoxication results in alternations of microtubule and microfilament expression, and the alternations might be related to its neurotoxicity. fast changes in beta-tubulin and beta-actin in rats

exposed to CS₂ could indicate a rapid change in the cytoskeleton metabolism: The beta-tubulin mRNA increased 207% and beta-actin 94% which might give insights in the metabokinetic prosperities of CS₂ on a cytoskeletal level. (49) Many electrophiles toxicants cause synaptic dysfunction by unknown mechanisms. It is recognized that synaptic activity is regulated by the redox state of certain cysteine sulfhydryl groups on proteins. Research indicates that thiolates are receptors for the endogenous nitric oxide (NO) pathway and that subsequent reversible S-nitrosylation finely regulates a broad spectrum of synaptic activities. Electrophilic neurotoxicants like CS₂ might, according to a hypothesized mechanism (16) produce synaptic toxicity by modifying these thiols. SNAP-25, NMDA, GAP-43, Methionine adenosyl transferases, v-ATPase are thiol-regulated proteins and protein complexes targeted by NO which further might explains the action of CS₂ toxicity. One study suggests that the effect of CS₂ on learning and memory ability in rats is related to the activity of NOS and the expression of nNOS in the hippocampus. (17)

Cancer and p53

The p53 gene has been proposed as tumour suppressor and a candidate susceptibility gene in schizophrenia. (52) results of one study indicate that occupational exposure results in a significant increase in P53 CGT>CTT transversions. (53) identified occupational exposure in combination with smoking as a significant risk factor for the mutation. It was concluded that AS-PCR of the P53 273rd codon transversions is a suitable technique for studying the effects of occupational exposure to CS₂. (53), (57).

The [CAC-Hålet](#) Swedish site [ADHD och ADD](#).

The etiology of Schizophrenia could be linked to endogenous Carbon disulfide CS₂ production. The manufacture and exposure to endogenous CS₂, could probably act in months after months before showing some of the symptoms of high CS₂ exposure (Hallucinations, Psychosis and personality changes)

Suggestions

To ensure a proper analysis of earlier undetectable biomarkers one might consider gas-analysis from skin and breath as an biomarker and emission source, since the CS₂ otherwise could leave undetected through the biggest organ - the skin. I propose analysis of total air content in a closed chamber with

subjects naked to avoid contamination with techniques for gas detection (59), (60) to reveal the biometrics of human endogenous CS₂ production. Which has not been done to my knowledge. By practising these suggestions it might be easier to understand and prevent the disease by detecting the prodromal and active systems conditions besides the genetic vulnerability and map out what role CS₂ play in the etiology of Schizophrenia.

References:

(1)

Wien Klin Wochenschr. 1958 Jun 13;70(24):445-6.
[Schizophreniform reactions in chronic carbon disulfide poisoning.]
[Article in German]
Petran V

(2)

Clin Pathol 1993;46:861-864
Increased pentane and carbon disulfide in the
breath of patients with schizophrenia
M Phillips, M Sabas, J Greenberg

(3)

Respiration. 1987;52(1):34-41.Links
Respiratory sensitivity to carbon dioxide in schizophrenia.
Verma R, Dewan M, Ashutosh K.

(4)

Acta Psychiatr Scand. 1990 Jun;81(6):497-506.
Cerebral blood flow responses to inhaled carbon dioxide in schizophrenia.
Mathew RJ, Wilson WH.
Department of Psychiatry, Duke University Medical Center, Durham, North Carolina 27710.

(5)

Am J Physiol Regul Integr Comp Physiol. 2009 May;296(5):R1473-95.
Integration of cerebrovascular CO₂ reactivity and chemoreflex control of breathing: mechanisms of regulation, measurement, and interpretation.

(6)

Adv Exp Med Biol. 2006;588:65-73
Control of cerebral blood flow during sleep and the effects of hypoxia.
Corfield DR, Meadows GE

(7)

J Korean Med Sci. 1998 Dec;13(6):645-51. Cerebral vasoreactivity by transcranial Doppler in carbon disulfide poisoning cases in Korea. Lee E, Kim MH.

(8)

Br J Anaesth. 2008 Nov;101(5):673-9. Epub 2008 Sep 12.
Carbon dioxide negatively modulates N-methyl-D-aspartate receptors.
Brosnan RJ, Pham TL.

(9)

1994: Kumar M; Lu W P; Ragsdale S W
Binding of carbon disulfide to the site of acetyl-CoA synthesis by the nickel-iron-sulfur protein, carbon

monoxide dehydrogenase, from *Clostridium thermoaceticum*.
Biochemistry 1994;33(32):9769-77.

(10)

Chin Med J (Engl). 2008 Dec 20;121(24):2553-6.
Effects of carbon disulfide on the expression and activity of nitric oxide synthase in rat hippocampus.
Guo XM, Tang RH, Qin XY, Yang J, Chen GY.

(11)

Yang KS, Choi HR, Kim JJ, et al. Study of carbon disulfide intoxication.
Seoul: Korean Ministry of Labor Press, 1999

(12)

Lee E, Kim MH. Cerebral vasoreactivity by transcranial Doppler in carbon disulfide poisoning cases in Korea. *J Korean Med Sci* 1998;13:645-651

(13)

J Korean Med Sci. 1998 Dec;13(6):645-51. Cerebral vasoreactivity by transcranial Doppler in carbon disulfide poisoning cases in Korea. Lee E, Kim MH.

(14)

Biochem. J. (1980) 188, 107-112
The Effects of Carbon Disulphide on Rat Liver Microsomal Mixed-Function Oxidases, in vivo and in vitro
Maria J. OBREBSKA,* Peter KENTISH and Dennis V. PARKE

(15)

Journal of Neurochemistry. 1971, Vol. 18, pp. 177 to 182. Pergamon Press.
Oxidation and phosphorylation processes in brain mitochondria of rats exposed to carbon disulfide.
S. Tarkowski Hanna Sobczak

(16)

Lefaux, R. 1968. Carbon disulphide. Pp. 117-119 in *Practical Toxicology of Plastics*. Cleveland, OH: Chemical Rubber Company

(17)

Gorny, R., Carbon disulfide-induced vitamin B6 deficiency in rats fed diets with different vitamin B6 contents, *Bromarol. Chem. Toksykol.*, 13(3), 299, 1980.

(18)

Washuettl, J., Winker, N., and Steiner, I., The effects of carbon disulfide on the vitamin B1 content in the serum of exposed workers, *Munch. Med. Wochenschr.*, 121(24), 819, 1979.

(19)

165. Miyagawa, K., Carbon disulfide poisoning – Effects of L-methionine and L-methionine combined with vitamin B12 on carbon disulfide poisoning, *Shikoku Acra Med.*, 6(3), 1, 1955.

(20)

Wronska-Nofer, T., Nofer, J., and Stanislaw, T., Disorders in excretion of niacin metabolites in carbon disulfide-poisoned animals, *Med. Pr.*, 16, 77, 1965.

(21)

Wronska-Nofer, T., The influence of low doses of nicotinic acid upon the development of lipid disturbances in rats chronically exposed to carbon disulphide, *hi. Arch. Arbeitsmed.*, 29(4), 285, 1972.

(22)

Knobloch, K., Effect of nicotinamide on excitability of the vestibular nerve and some motor nerves in chronic carbon disulfide poisoning in guinea pigs, *Med. Pr.*, 12, 355, 1961.

(23)

Kuljak, S. and Stern, P., Protective effect of glutathione and xanthinol nicotinate against carbon disulfide poisoning in the mouse, *Arh. Hig. Rada Toksikol.*, 22(2), 137, 1971

(24)

Paine, A. J., Williams, L., and Legg, R. F., Apparent maintenance of cytochrome P450 by nicotinamides in primary cultures of rat hepatocytes, *Life Sci.*, 24, 2185, 1979.

(25)

Silvestroni, A. and Rimiani, R., Microcirculation in chronic experimental intoxication with carbon disulfide. Effects of nicotinic acid, *Folia Med.*, 53, 1, 1970.

(26)

McKenna, M. J. and DiStefano, V., Carbon disulfide. I. The metabolism of inhaled carbon disulfide in the rat, *J. Pharmacol. Exp. Ther.*, 202(2), 245, 1977
Reaction of carbon disulfide with blood in vitro, *Prac. Lek.*, 6, 11, 1954.

(27)

Brieger, H., Carbon disulfide in the living organism-retention, biotransformation and pathophysiological effects, in *Toxicology of Carbon Disulfide*, Brieger, H., Ed., Excerpta Medica Foundation, Amsterdam, 27, 1967.

(28)

Gadaskina, I. D. and Andreeva, N. B., Biochemical shifts occurring in the organism following carbon disulfide poisoning (free SH groups and blood ceruloplasmin; copper and zinc metabolism), *Gig. Tr. Prof. Zabol.*, 13, 28, 1969.

(29)

Kotas, P., Obrusnik, I., Lukas, E., and Krivanek, M., Determination of zinc and copper in the peripheral nerves of rats with carbon disulfide-induced neuropathy, *J. Radioanal. Chem.*, 19(2), 263, 1974.

(30)

(Scheel, 1967). ISBN 92 4 154070 2, World Health Organization 1979
COHEN AE, SCHEEL LD, KOPP JF, STOCKELL FR, Jr, KEENAN RG, MOUNTAIN JT, PAULUS HJ. Biochemical mechanisms in chronic carbon disulfide poisoning. *Am Ind Hyg Assoc J.* 1959 Aug;20(4):303–323.

(31)

Wilmarth KR, Froines JR (November 1992). "In vitro and in vivo inhibition of lysyl oxidase by aminopropionitriles". *J Toxicol Environ Health* 37 (3): 411–23. PMID 1359158

(32)

Csiszar K. Lysyl oxidases: a novel multifunctional amine oxidase family. *Prog Nucleic Acid Res Mol Biol.* 2001; 70: 1–32.

(33)

Chem Res Toxicol. 1998 May;(5):544-9.

Carbon disulfide and N,N-diethylthiocarbamate generate thiourea cross-links on erythrocyte spectrin in vivo.

Erve JC, Amarnath V, Graham DG, Sills RC, Morgan AL, Valentine WM.

(34)

Volume 272, Number 51, Issue of December 19, 1997 pp. 32370-32377

Irreversible Inhibition of Lysyl Oxidase by Homocysteine Thiolactone and Its Selenium and Oxygen Analogues Implications for Homocystinuria

(35)

Arteriosclerosis, Thrombosis, and Vascular Biology. 2002;22:1409-1414

Low Density Lipoproteins Downregulate Lysyl Oxidase in Vascular Endothelial Cells and the Arterial Wall
Cristina Rodríguez ; Berta Raposo ; José Martínez-González ; Laura Casaní ; and Lina Badimon

(36)

Madlo, Z. and Soucek, B., Absorption, metabolism, and action of carbon disulfide in the organism. VII.

Inhibition of serum cholinesterase by carbon disulfide, *Prac. Lek.*, 6, 312, 1953

Soucek, B. and Madlo, Z., Absorption metabolism, and action of carbon disulfide in the organism. VIII.

(37)

Acta Neuropathol. 1984;63(3):255-63.Links

Ultrastructure of carbon disulphide neuropathy.

Jirmanová I, Lukás E.

(38)

Ca²⁺ Calmodulin levels was increased in cerebral cortex, hippocampus and spinal cord. Volume 179,

Issues 2-3, 15 May 2009, Pages 110-117 Changes of lipid peroxidation in carbon disulfide-treated rat

nerve tissues and serum Da-Qing Suna, b Ai-Wu Lic, , Ju Lid, Dian-Guo Lib, Yi-Xin Lib, Hao-Fengb and Ming-Zhi Gongb, *Chemico-Biological Interactions.*

(39).

Davidson M, Feinleib M. Carbon disulfide poisoning: A review.

Am Heart J 1972;83:100-114

(40).

Lee KB, Byoun HJ, Choi TS, Kim SS, Cho WY, Kim HK.

Clinical manifestation of chronic carbon disulfide intoxication.

Korean J Int Med 1990;39:245-251

(41).

Choi JW, Jang SH. A review of the carbon disulfide poisoning

experience in Korea. *Korean J Occup Med* 1991;3:11-20

(42).

Yang KS, Choi HR, Kim JJ, et al. Study of carbon disulfide intoxication.

Seoul: Korean Ministry of Labor Press, 1999

(43)

Aaserud O, Gierstad L, Nakstad P, et al. Neurological examination,

computerized tomography, cerebral blood flow and neurophysiological examination in workers with long-term exposure to carbon disulfide. *Toxicology* 1988;49:277-28

(44)

Aaserud O, Hommeren OJ, Tvedt B, et al. Carbon disulfide exposure and neurotoxic sequelae among viscose rayon workers. *Am J Ind Med* 1990;18:23-37

(45)

Sugimura K, Kabashima K, Tatetsu S. Computerized tomography in chronic carbon disulfide poisoning. *No to Shinkei* 1979; 31:1245-1253

(46)

Huang CC, Chu CC, Chen RS, et al. Chronic carbon disulfide encephalopathy. *Eur Neurol* 1996;36:364-368

(47)

Peters HA, Levine RL, Matthews CGM et al. Extrapyrarnidal and other neurologic manifestations associated with carbon disulfide fumigant exposure. *Arch Neurol* 1988;45:537-540

(48)

Ca²⁺ Calmodulin levels was increased in cerebral cortex, hippocampus and spinal cord. Volume 179, Issues 2-3, 15 May 2009, Pages 110-117 Changes of lipid peroxidation in carbon disulfide-treated rat nerve tissues and serum Da-Qing Suna, b Ai-Wu Lic, , Ju Lid, Dian-Guo Lib, Yi-Xin Lib, Hao-Fengb and Ming-Zhi Gongb, *Chemico-Biological Interactions*.

(49)

Alterations of microtubule and microfilament expression in spinal cord of carbon disulfide intoxicated rats. *Chinese journal of industrial hygiene and occupational diseases*. Original title: Zhonghua lao dong wei sheng zhi ye bing za zhi Zhonghua laodong weisheng zhiyebing zazhi. *Zhonghua Lao Dong Wei Sheng Zhi Ye Bing Za Zhi*. 2007 Mar;25(3):148-51 Pan GB, Song FY, Zhao XL, Yu LH, Zhou GZ, Xie KQ.

(50)

Toxicological Sciences 94(2), 240–255. Richard M. LoPachin. David S. Barber doi:10.1093/toxsci/k?066 Advance Access publication July 31, 2006

(51)

Chin Med J (Engl). 2008 Dec 20;121(24):2553-6. Effects of carbon disulfide on the expression and activity of nitric oxide synthase in rat hippocampus. Guo XM, Tang RH, Qin XY, Yang J, Chen GY.

(52)

Schizophr Res. 2000 Feb 14;41(3):405-15 Apoptosis and schizophrenia: is the tumour suppressor gene, p53, a candidate susceptibility gene? Catts VS, Catts SV. Schizophrenia Research Unit, South Western Sydney Area Health Service, Liverpool Hospital, Liverpool, NSW, Australia.

(53)

Int J Hyg Environ Health. 2007 Jan;210(1):69-77. Epub 2006 Sep 1. Use of genotypic selection to detect P53 codon 273 CGT>CTT transversion: application to an

occupationally exposed population.
Carton T, Tan XD, Hartemann P, Joyeux M.

(54)

Forensic Sci Int. 2005 Oct 29;153(2-3):147-55. Epub 2004 Nov 25.
A study of volatile organic compounds evolved from the decaying human body.
Statheropoulos M, Spiliopoulou C, Agapiou A.
School of Chemical Engineering, National Technical University of Athens (NTUA)

(55)

(Purdon et al., 2002; Purdon and Rapoport, 2007).

(56)

Bartonicek V. The distribution of carbon disulfide in whole blood, the brain and the suprarenal gland over a given period in parenteral administration in white mice. *Prac Lek* 1957; 9:28-30.

(57)

The modification of genetic expression after CS₂ exposure have been shown in humans with p53. *Chem Biol Interact*. 2009 May 15;179(2-3):110-7. Epub 2008 Nov 25.
Changes of lipid peroxidation in carbon disulfide-treated rat nerve tissues and serum.
Sun DQ, Li AW, Li J, Li DG, Li YX, Hao-Feng, Gong MZ.
Shandong University, Jinan, Shandong, China.

(58)

Schizophrenia Research Volume 62, Issue 3, 1 August 2003.
The niacin skin flush test in schizophrenia- a combined a quantitative dose-response study

(59)

MCCANN Patrick, NAMJOU Khosrow, ROLLER Chad, MCMILLEN Gina, KAMAT Pratyuma. IV-VI
Semiconductor Lasers for Gas Phase Biomarker Detection
Proceedings of SPIE, the International Society for Optical Engineering ISSN 0277-786X

(60)

Mater. Res. Soc. Symp. Proc. Vol. 891 © 2006 Materials Research Society
Patrick J. McCann¹ and Yurii Selivanov² ¹ School of Electrical and Computer Engineering, University of Oklahoma, Norman, OK 73019 ² P. N. Lebedev Physical Institute, Russian Academy of Sciences, Leninskii Pr. 53, 119991, Moscow, Russia

(61)

Br J Anaesth. 2008 Nov;101(5):673-9. Epub 2008 Sep 12.
Carbon dioxide negatively modulates N-methyl-D-aspartate receptors. Brosnan RJ, Pham TL.

(62)

Am J Physiol Regul Integr Comp Physiol. 2009 May;296(5):R1473-95.
Integration of cerebrovascular CO₂ reactivity and chemoreflex control of breathing: mechanisms of regulation, measurement, and interpretation.

(63)

Adv Exp Med Biol. 2006;588:65-73
Control of cerebral blood flow during sleep and the effects of hypoxia.
Corfield DR, Meadows GE

(64)

Activity of glutamate decarboxylase in the brain of rats exposed to carbon disulfide

International Archives of Occupational and Environmental Health Volume 33, Number 1 / March, 1974
Stanislstrokaw Tarkowski

(65)

Tarkowski S, Cremer JE. 1972. Metabolism of glucose and free amino acids in brain, studied with C-labelled glucose and butyrate in rats intoxicated with carbon disulfide. J Neurochem 19:2631-2640.

(66)

The Journal of Neuroscience, 1999, 19:RC16:1-9

RAPID COMMUNICATION Novel Injury Mechanism in Anoxia and Trauma of Spinal Cord White Matter: Glutamate Release via Reverse Na⁺-dependent Glutamate Transport Shuxin Li¹, Geoff A. R. Mealing², Paul Morley², and Peter K. Stys¹

